



Est. 2003

LET THE

JOURNEY BEGIN

OPPORTUNITIES NOW

BENEFITS FOR LIFE

As a school that values the unique potential of each student under our care, we believe in offering a supportive, caring learning environment and a diverse curriculum that inspires each individual to follow their passion.

Georgiana Molloy Anglican School opened in 2003 on an impressive 15.2 hectare campus 5km to the east of Busselton. Since its modest beginnings with just 128 students, the school has experienced remarkable growth.

Our school is situated on Noongar Boodja, the Ancestral Lands of the Wadandi people. We honour and acknowledge the Wadandi people as the Traditional Custodians of this land on which we learn, work and play. As guests in our classrooms, Indigenous Australians and Torres Strait Islanders participate in learning activities together with our students and children. GMAS has an Indigenous walkway where our students can celebrate and explore their culture through indigenous plants, art and the environment.

GMAS SCHOOL VALUES

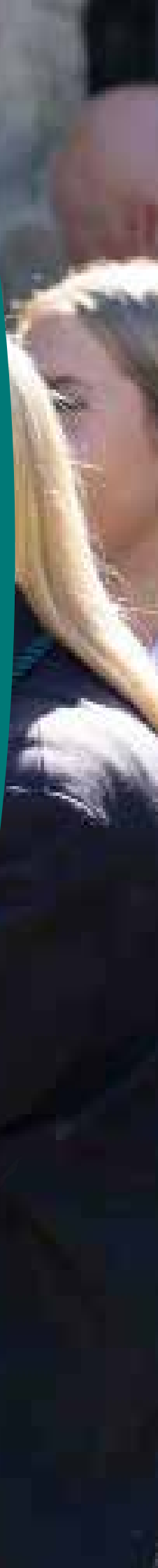
Respect

Accomplishment

Integrity

Spirituality

Empathy







BELONGING.

BEING. BECOMING.

EXCEPTIONAL STAFF

Our teaching staff are outstanding, caring educators. They go above and beyond to ensure that each student is fully supported. They are role models, counsellors, cheerleaders and mentors dedicated to seeing your child thrive.

STUDENT WELLBEING

Our Pastoral Care Program is woven throughout our daily operations and curriculum, ensuring each student's academic, emotional, social, physical and spiritual needs are being met. Students have access to counselling, chaplaincy and learning support.

LEARNING ENVIRONMENT

Set amid 15 hectares of beautiful open planned and landscaped grounds, the School offers modern, technology rich facilities which create an environment conducive to learning and social engagement. The entire school's infrastructure is in place to support and enhance each student's learning experience.

DIGITAL LEARNING

GMAS is an Apple 1:1 school. Every student in Secondary School has access to their own devices. Students are issued an iPad or Mac Book Air. We believe in the importance of empowering our students for a digital future by educating them to become effective, safe and responsible online users. Primary students have individual access to ranges of devices within the classroom.



INDIVIDUAL LEARNING PLANS

GMAS provides an inclusive environment for students' individual learning needs, including our gifted and talented students and those requiring learning support. Students of all abilities are nurtured and encouraged to develop their own unique skill sets, individual strengths and passions.

OUTSIDE THE CLASSROOM

We offer over 50 different co-curricular activities outside of the classroom. Our hope is for each student to discover and explore their unique talents and interests while developing a healthy life balance.

SCHOOL COMMUNITY

We pride ourselves on the strong and supportive school community we have built over the past 20+ years. We have a very active P&F who ensure our events calendar remains vibrant all year round.

SERVICE

Our school motto is *'Rejoice in Service'*. We promote and facilitate a range of programs, events and activities that facilitate service involvement. Students are encouraged to look beyond themselves to see how they may contribute to the world around them.

SUSTAINABILITY

We see merit in creating a school culture that instils a sense of environmental responsibility. Students learn sustainability through educational activities and real life practices.



PRIMARY

SCHOOL

At GMAS, we recognise the early years as a time of exploration and discovery, and believe that each child is a strong, capable and resilient learner who abounds with awe and wonder. Each child is supported in developing their own special gifts through a child-focused curriculum that acknowledges the whole child and further develops their unique capabilities and a love of learning. For children who are not yet 3 years of age, we invite you to come along to the GMAS Playgroup, run by Playgroup WA. Playgroup provides an excellent opportunity to meet other families and experience a taste of Little Georgies for those who aren't quite old enough.

Our Primary programs are innovative, engaging and educational. Children develop their creativity, emotional wellbeing, sense of belonging and social skills throughout their time in the Primary School at GMAS.

EARLY CHILDHOOD

Early Childhood (3 year old program to Year 2) Education at GMAS offers a range of experiences that will assist in developing a positive self-image and provide learning experiences which will enable each individual child to develop at their own rate.

Our philosophy is for all children to experience play-based learning that is engaging and builds success for life.

Our specialised Early Childhood teaching staff will work in partnership with you, your children's first and most influential educators, to develop learning programs that reflect children's ideas, interests, strengths and abilities to ensure your child is learning to their full potential.

The Early Learning Centre (ELC) is a self-contained facility with its own generously sized classrooms, kitchen facilities, toilets and an expansive break out area for shared activities. All areas of the ELC are modern, air-conditioned and designed to spark imagination, creative play and an early love of learning.

Our Little Georgies and Kindergarten classes share a fully-fenced nature inspired playground with a mud kitchen, sand pit, edible gardens, open grassed area and flexible space to inspire imaginative games and play.

Pre-primary students enjoy a separate fully-fenced nature playground which includes a large sandpit, water play feature, climbing equipment, cubby house and big trees to climb and explore. In addition, students in Years 1 and 2 also have access to a dedicated play area with climbing equipment, slides, cubbies and vegetable gardens, as well as open grassy areas and flexible spaces for imaginative play and social skills development.



JUNIOR SCHOOL

The Junior School (Years 3 to 6) blocks, house four learning spaces in each, all connecting to generous open spaced pods. The pods are designed to be flexible learning areas. They are used in a variety of ways, from working in small groups to performing practical activities.

The Junior School has specialist facilities for Art, Music, Languages, Digital Technology and Physical Education/Sport. Students also make use of the School's shared amenities, such as the Multipurpose Activity Centre and Library.

Students are encouraged to keep active during the day on multiple playgrounds, climbing frames, kitchen gardens, a multipurpose sports court, as well as spaces for social outdoor games.

Students are familiarised, from an early age, with computer technology and interactive learning equipment such as smart boards, laptops and iPads and our teachers are committed to continually evolving and extending our programs to ensure that our students are fully equipped to enter the advancing modern world.

The Learning Support programs provide assistance to students with additional needs and those requiring support in the development of their literacy and numeracy skills.



Primary School opportunities at GMAS include:

- Specialist lessons in Music, Visual Arts, Digital Technology, Health & Physical Education and Japanese.
- Access to learning support or extension as required.
- Upper Primary students have the opportunity to participate in a Kitchen Garden program and Sustainability Programs, which introduces students to food education through growing produce and cooking delicious seasonal meals.
- The opportunity to participate in a broad range of co-curricular activities and after school clubs.
- Annual Ignite program.





SECONDARY SCHOOL

MIDDLE SCHOOL

Learning is a continuous journey and our Middle School (Years 7 to 9) is designed to ensure a smooth transition from Junior School to Secondary School. We recognise that young adolescents are experiencing rapid physical, social and emotional growth and that learning programs must provide them with a strong foundation of knowledge, skills and strategies required for Senior School and beyond.

We offer an innovative Year 7 Transition Program that allows for the move from Primary to Secondary School to be as smooth as possible. We aim to consolidate and build on Year 6 academic growth with specifically chosen Year 7 staff. We believe in keeping our students younger for longer through our age appropriate wellbeing and pastoral approaches. This allows for a softer landing in Year 7, setting our students up for success.



GMAS is committed to providing an educational program that stimulates natural curiosity whilst also engaging and encouraging students to develop a thirst for learning. Our Middle School curriculum is deliberately broad and diverse. Year 7 and 8 students study a common course which is made up of compulsory courses studied for the entire year and elective courses which are studied on a rotation basis. This allows students the opportunity to have a wide variety of experiences. Students in Year 9 study a mix of core and elective courses to spark their interests and desired pathways.

Our dedicated, proactive staff members and fun, enthusiastic students make Middle School at GMAS a dynamic, inclusive atmosphere.



SENIOR SCHOOL

Senior School at GMAS encompasses Years 10 to 12 and is a unique pre-tertiary experience which expands on the knowledge and skills gained in Middle School.


Students further develop their sense of identity, their strengths and their interests in certain learning areas.

The culture of Senior School affords students greater responsibility, autonomy and independence in preparation for life beyond school. These final years of schooling are the most challenging. Each student benefits from a strong pastoral care model which is characterised by supportive and productive relationships with teachers, peers and family.

CURRICULUM

Students at GMAS are able to access a range of ATAR and General Courses as well as VET programs.

Students have the option to:

- select an academic pathway comprising of ATAR subjects, general subjects or a combination of both;
 - engage in part time offsite Vocational Education & Training (VET) at one of our partner training institutes;
 - obtain a Cert I, II, III or IV qualification;
 - enter into a school-based traineeship;
 - participate in workplace (on the job) learning;
 - enrol in a certified endorsed program; or
 - engage in a combination of the above.
- 







VISION

As a school of the Anglican Schools Commission we provide excellence in education, nurture fulfilment and empower success



MOTTO

Rejoice in service



PURPOSE

Providing opportunities now...
benefits for life



Secondary School opportunities at GMAS include:

- Access to a wide range of elective courses in The Arts, Technology, Health & Physical Education, and Languages.
- Learning support or extension as needed, including after-school group tuition and additional assistance.
- Participation in seminars, workshops, and conferences on leadership, mental health, resilience, safe online behaviors, road safety, and study skills.
- Opportunities to engage in over 50 different co-curricular activities and the annual Ignite program.
- Participation in a variety of events and activities, including carnivals, activity afternoons, free dress days, and more.
- Opportunities for school trips and tours.
- Assistance with applying for scholarships, awards, and programs.
- Guidance on life after school, covering topics like employment, personal finances, taxation, and renting.

LEADERSHIP AT GMAS

At GMAS, we offer a variety of opportunities for students to showcase their leadership abilities, both informally and formally. These experiences help to cultivate the skills necessary for students to become influential leaders in the future. Our formal leadership programs are available in Year 6, Year 9, and Year 12, where students develop essential skills such as self-awareness, self-management, decision-making, communication, teamwork, and a strong sense of service. In these roles, they serve as role models within the school community.

At GMAS, students have the chance to be elected as a **School Leader**.

This entails a number of duties including:

- Being a role model for other students.
- Acting as school ambassadors.
- Encouraging involvement in school events.
- Public speaking and student liaison.



A SENSE OF WELLBEING

PASTORAL CARE

The staff at GMAS are committed to developing strong, restorative and caring pastoral relationships with students and parents, encouraging them to be open in their communication.

This communication triangle of parents, children and the School is alive and flowing from the moment an offer of enrolment is accepted. It stands to reason that, with parents' intimate knowledge of their child, the teachers' professional educational skills and the student's commitment to their learning, that consistent communication between all three parties is required to bring out the best in a safe and caring environment.

GMAS provides an inclusive environment for students' individual learning needs including giftedness, intellectual disability and specific learning disorders.

LEARNING ENRICHMENT

A variety of provisions are offered to assist students with learning difficulties to reach their potential. Students of all abilities are supported and encouraged to develop their skills and individual strengths.

The style of assistance offered is dependent upon specific student need and available resourcing. In addition, Learning Support Staff conduct regular literacy and numeracy screening across the School providing specialised programs for students requiring intervention or extension in these curriculum areas.

HOUSES

Our Houses promote positivity, self-identity, belonging, integrity and pride amongst all students at GMAS.

Belonging to a House from the time you enter GMAS, to the time you leave, allows for ongoing connection and alternative pastoral focus for all students. From 2025 our Secondary students will have further support in the form of House Pastoral Groups.

Houses engage in a variety of activities and competitions which promote breadth of interest, valuing individual differences, developing student's communication skills and an awareness of others. Activities will include Interhouse swimming, athletics, cross-country, GMAS Merit Award system and a host of other opportunities.

The six Houses are named after coastal bays in the South West region:

Bunker (red), Eagle (green), Flinders (light blue), Geographe (yellow), Hamelin (purple) and Meelup (dark blue).

COMMUNITY

'*Rejoice in Service*' is the School motto, and so community service is a key component of the GMAS ethos. Students become involved in events to support the local and wider community in many ways. Activities include tree planting, caring for wildlife, helping at St. Mary's Op-Shop and Cliff's Kitchen. Students are involved in fundraising initiatives including Australia's Biggest Morning Tea and The PushUp Challenge, collections for the GMAS Winter Appeal as well as being involved in Surfing with the Disabled and an Intergenerational Learning Program - just to name a few.

BEHAVIOUR SUPPORT

GMAS engages in Restorative Practice, which has at its core, a focus on supportive and respectful connections and behaviour.

Building positive relationships and maintaining high standards of student behaviour is paramount to creating a harmonious learning environment for students, staff, and community members. As an Anglican school we uphold the Christian values and ethics in the way we care for each other in the school environment and in our speech, behaviour and attitude.

If unexpected student behaviours occur, a restorative practices approach is engaged. Each individual situation supports students to take responsibility for their behaviour, by acknowledging what has happened and the people who have been affected by their behaviour and focusing on repairing the harm that has been done.

We follow a restorative continuum to elevate positive student behaviour.

Restorative Practices are designed to build positive relationships, prime expected behaviours, resolve conflict, and improve student behaviour.

BEYOND

THE CLASSROOM

CO-CURRICULAR

We have over 50 different co-curricular activities on offer. These activities include sports, after school clubs, music and the arts, plus after school tutoring, thoughtfully selected to allow our students to pursue their interests and passions.

Students from Pre-primary to Year 12 are able to participate in the co-curricular program, with activities being held before and after school, at lunch time, on weekends and at times during the holidays. Activities are supervised by our staff and volunteers from our school community. Some activities are also supported by community organisations such as regional sporting clubs and associations.

We encourage our students to discover new interests, work with others in a range of environments, acquire their leadership style and broaden their relationships beyond their immediate peers.

IGNITE PROGRAM

The GMAS school wide 'Ignite' Camp Program is a fantastic opportunity for each year level to develop new skills, friendships and interests. Students are offered real life experiences in a variety of contexts. The program involves all students from Early Learning to Year 12 and includes specialist programs, overnight camps, skill development, community engagement and service learning.

Students have the opportunity strengthen their skill sets in the areas of leadership, communication and resilience.







SUSTAINABILITY

At GMAS, sustainability is a key component of our educational philosophy, integrated across the K to 12 curriculum. From the early years, students are introduced to the principles of sustainable living, fostering an awareness and understanding of environmental responsibility. This commitment culminates in Year 9, where students can choose an elective focused on sustainability. This course explores various aspects of sustainable living, from energy conservation to waste management and sustainable agriculture.

Students can join The Green Team, a group committed to finding and implementing solutions to reduce waste and increase recycling throughout the school. This hands-on involvement allows students to contribute to the school's sustainability efforts, empowering them to make tangible changes.

Leadership in sustainability is also fostered at GMAS, with students in Year 9 and Year 12 having the opportunity to be elected to the sustainability portfolio. These student leaders serve as mentors and role models for their younger peers, demonstrating how small, meaningful changes can have a significant impact on both the school community and the planet. Through these initiatives, GMAS not only educates students about sustainability but also instills in them the values and skills needed to lead and inspire others in the ongoing effort to protect our environment.



TRAVEL OPPORTUNITIES

At GMAS, we place great importance on extending learning beyond the classroom through various travel opportunities. Our students participate in school camps, a Japanese exchange program with our sister school, and interstate visits, all designed to enrich their educational experience.

The Japanese exchange with Sanda Gakuen is a key element of our cultural exchange initiatives, broadening students' global perspectives. This program allows students to enhance their language skills, form lasting friendships and gain a deeper appreciation for cultural diversity.

Additionally, our variety of interstate visits provide students with an opportunity to explore Australia's rich history and varied cultures, fostering a strong sense of national identity and pride.

These travel experiences are integral to the growth of GMAS students, equipping them with the skills, knowledge, and perspectives needed to become well-rounded, globally-aware individuals.





MORE THAN JUST A SCHOOL

Georgiana Molloy (1805-1843) is the patron and namesake of our school. As an early settler in the South West, Georgiana was of Anglican faith and an avid collector of botany. Although over 150 years have passed since Georgiana Molloy first came to the area, she is an inspiration for people living in today's modern world. "*Rejoice in Service*" is an apt motto for Georgiana Molloy Anglican School as it so accurately reflects its patron, Mrs Georgiana Molloy. Our students are encouraged to look beyond themselves to see how they may contribute to the world around them.

Georgiana Molloy Anglican School today offers students an excellent education founded on traditional values, but shaped by the needs of students today and tomorrow. Our school is proud to be part of the Anglican Schools Commission where inclusion is a core value, diversity is promoted, and difference is respected.

At GMAS, a strong commitment to all facets of student life has been developed and nurtured since its inception. We look forward to continuing to offer a variety of opportunities for our students, to build relationships within and across year groups, and to make connections of care within our broad community as well as in the wider community.







YOUR FUTURE

Choosing the right school for your child can be an overwhelming decision. Establishing your child's individual needs and the learning environment that will best suit your child is the most important.

If you choose Georgiana Molloy Anglican School you will be choosing a school offering a diverse curriculum that caters to your child's interests beyond academia, providing a holistic and engaging educational experience.

If you have any questions please contact us on (08) 9752 5252 or email enquiries@gmas.wa.edu.au.

If you would like more information on our School scan the code below or visit: www.gmas.wa.edu.au.

We look forward to welcoming your family to our community.

**SCAN TO VISIT
OUR WEBSITE**







Est. 2003

Opportunities now...benefits for life

2 Hawker Approach, Busselton WA 6280

PO BOX 920, Busselton WA 6280

 (08) 9752 5252  enquiries@gmas.wa.edu.au

 gmas.wa.edu.au  [gmaswa](https://www.facebook.com/gmaswa)

A school of the Anglican Schools Commission (Inc.)